



10 September 2020

Dear Parents and Carers

You will be aware that new restrictions apply in England from Monday 14 September. We have listened to the government's campaign of Hands, Face, Space and reviewed our COVID-19 measures to make sure that we can do everything possible to minimise risk and keep everyone safe. From Monday the following will be in place and we recommend this is followed.

The Main School Site

Hands

On arrival at school at 8.30am students will go directly to their tutor room. Students can wash their hands; we have, as per my earlier communications, installed more sinks. Hand sanitiser is available at all entrances and we constantly remind students to use it. Each classroom has hand sanitiser and again staff remind students to use it. A number of students are also carrying their own small bottles of sanitiser which is useful and sensible and I would encourage you to consider this as well if you are not doing so already.

Throughout the day students are being reminded of the school's COVID-19 protocols and encouraged to maintain high levels of personal hygiene.

Face - The wearing of masks in school

The guidance states "Nationwide, the government is not recommending face coverings are necessary in education settings generally because a system of controls, applicable to all education environments, provides additional mitigating measures. School and colleges will have the discretion to require face coverings in indoor communal areas where social distancing cannot be safely managed, if they believe that it is right in their particular circumstances.

Examples of where education leaders might decide to recommend the wearing of face coverings – for pupils, staff and visitors – in communal areas of the education setting include:

- where the layout of the school or college estate makes it particularly difficult to maintain social distancing when staff and pupils are moving around the premises.
- where on top of hygiene measures and the system of controls recommended in the full opening guidance to schools (<https://www.gov.uk/government/publications/actions-for-schools-during-the-coronavirus-outbreak/guidance-for-full-opening-schools>) and FE colleges and providers (<https://www.gov.uk/governmentpublications/coronavirus-covid-19-maintaining-further-education-provision>), permitting the use of face coverings for staff, pupils or other visitors would provide additional confidence to parents to support a full return of children to school or college."

Saint Gregory's, Bath

Combe Hay Lane,
Odd Down, Bath, BA2 8PA

T 01225 832873

F 01225 835848

E stgregorys_sec@bathnes.gov.uk

www.st-gregorys.org.uk

We have now decided to recommend that students wear masks in communal areas, travelling to and from school, irrespective of the mode of transport, whilst waiting to enter school in the morning and at the change of lessons, at break and lunchtime when social distancing is not always possible and when using student toilets.

Staff have all been issued with visors and advised to wear these when moving around school and in their teaching space if they wish.

If students wish to wear a mask or visor within classrooms as we have stated previously we fully support this personal choice.

Space

If students arrive before 8.30am they must wait in the designated waiting area. Years 7 – 10 have waiting zones in the front car park which has been cleared and is closed to cars. Year 11 need to wait in the designated area outside The Gateway.

All students in Year 7 – 10 have been given a coloured badge to be worn at all times in school. This visual reminder will help staff to identify student year group bubbles so that we can maintain, as far as possible, the integrity of our bubbles.

The Gateway

Hands

When students enter The Gateway they should sanitise or wash their hands. We have made sure the sink in the entrance hall is accessible and there is an automatic hand sanitiser station on the wall. Students are required to use one of these when they enter the building. They are also reminded that there is sanitiser available throughout the school site; good personal hygiene is essential to keeping safe at this time. Students can use the sanitiser provided or use their own.

Face

Students are strongly encouraged to wear face masks when walking around The Gateway and the wider school during busy periods. In The Gateway this mainly applies to the café, LRC, toilets and corridors.

Space

The Gateway is one way during every lesson change, break and lunchtime to support greater social distancing. Please refer to the plan at the end of my letter which students have been asked to familiarise themselves with

The main entrance is 'entrance only'. To exit the ground floor students can use the fire escape at the back of the LRC or the door that leads to the back patio. Students should then walk around the building, not through the car park.



On the first floor students must exit via the fire escape at the end of the corridor. The internal staircase must only be used to go up. If students require access to the toilet during lesson time they can use the stairs to come down – these measure are to protect students at busy times.

The main door to the LRC will be one way. Similarly, during lesson times this rule is flexible to permit access to the toilet.

Students are also asked to note the instructions if they are waiting for a lesson in G1, G2 or G3. The one way system will reduce congestion in the corridors but students must make sure they wait for their lessons in the specified areas.

As you are all aware, we are living through unprecedented times.

I would also like to take this opportunity to remind parents and carers that if you, your child or a member of your household is displaying symptoms of COVID-19:

- high temperature
- new continuous cough
- loss or change of sense of smell or taste

you should self-isolate for 14 days and get a COVID-19 test. We have been advised that the whole household should isolate.

All teaching staff have been instructed to use Google Classroom at all times so that students not in school can access their classwork and submit their work via Google Classroom. Please ensure your child has logged on to their Google Classroom and can access their work. If you have any concerns about Google Classroom access please contact ITsupport@st-gregorys.org.uk.

We are constantly reviewing and updating all of our procedures. I would like to take this opportunity to thank you for your support and share what a joy it is to have our students back in school.

Yours faithfully



A Cusack
Headmistress

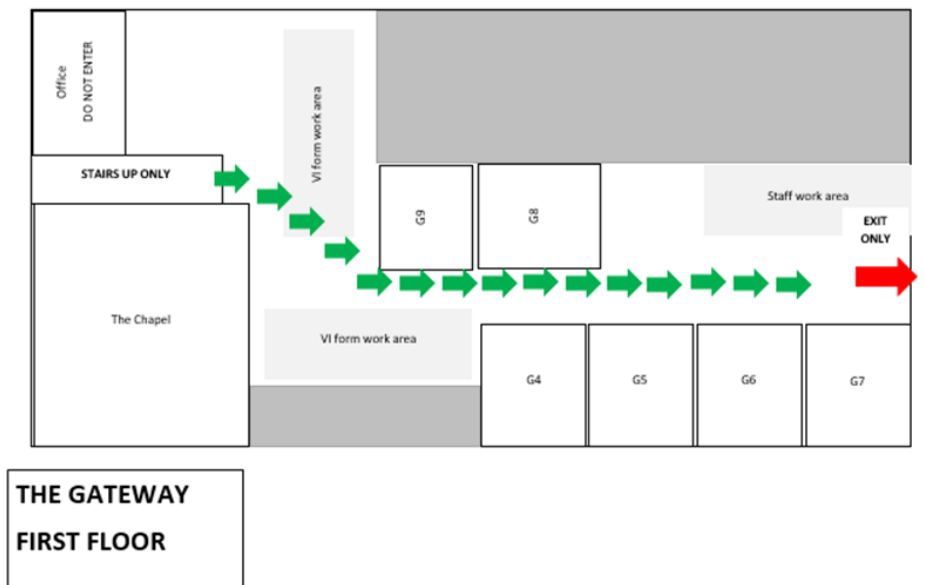
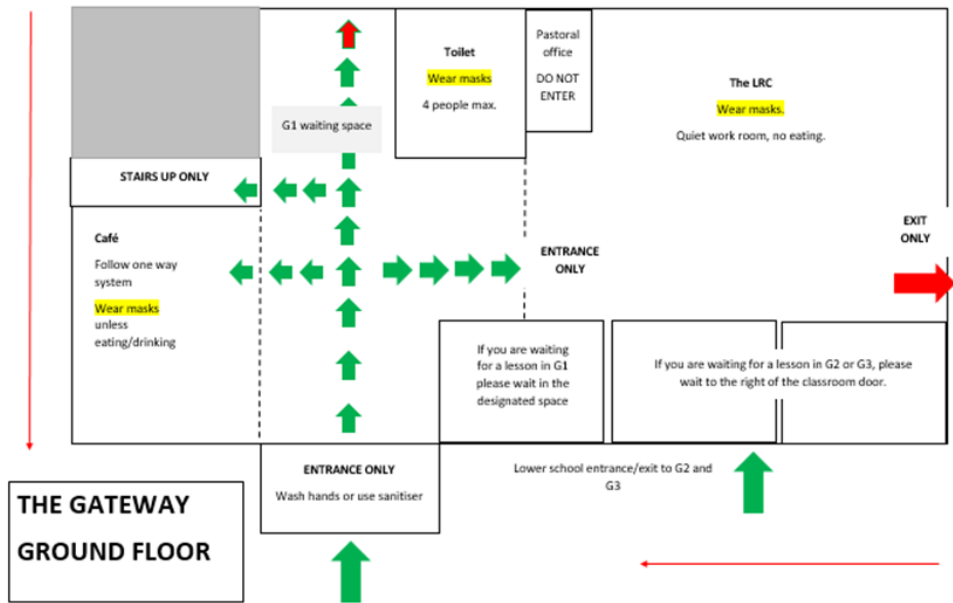


1979 · · 2020

SaintGREGORY'S Bath

'In Christ we flourish'

If you are using the back patio, there is an exit route around the side of the building if you wish to use it. If not, you are allowed back in via the exit door.



Saint Gregory's, Bath

Combe Hay Lane,
Odd Down, Bath, BA2 8PA

T 01225 832873

F 01225 835848

E stgregorys_sec@bathnes.gov.uk

www.st-gregorys.org.uk